



Penygarn Community Primary School

NEWSLETTER JANUARY 2021

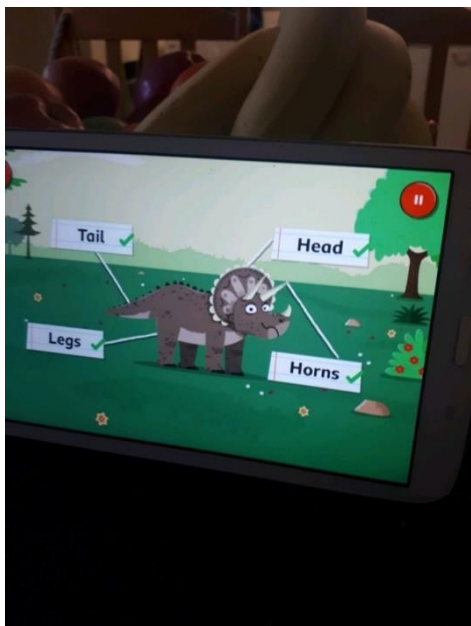
Cylchlythyr Ionawr 2021

Annwyl Rieni (Dear Parents/Carers)

Welcome to our first newsletter of 2021, and what a different start to our year it has been.

We are so pleased to see that you are all working so hard during this time, and it has been lovely to see lots of photos of all the work you've been doing at home. We have included just a snapshot of the wonderful things that are being sent to below. Keep going for now, and hopefully we will all be reunited very soon.





For more photographs of work from our lovely children, please visit the website and the gallery section, under the 2020/21 tab.



We thought we would take this opportunity to share with you again our Penygarn vision for Blended Learning and what it look likes on a day to day basis.

Blended Learning

Blended Learning is a combination of face-to-face learning and distance learning. These approaches should complement each other and can be driven by a single curriculum. It should be underpinned by good quality teaching.

Aims

1. To provide a link between home and school so that pupils and parents can share information, work and ask questions when needed
2. To support all stakeholders and uphold our open-door policy remotely
3. To ensure mental and emotional wellbeing is a key focus and integrated into our everyday practice (see appendix 1)
4. To provide an on-line education using Google Classroom, Google Drive, Class Dojo, Mathletics, MYON, Accelerated Reader and SeeSaw? as the main resource; pupils are set work by their class teacher which encompasses the Four Purposes of the Curriculum for Wales
5. To ensure coherence between in school and remote/home learning
6. To provide alternative work for families not on-line or with limited access (or no access) to IT devices via home learning packs
7. To provide feedback on work completed through Google Classroom, Google Drive, Google Meets, SeeSaw or Class Dojo

Blended Learning - Common Principles

Blended learning should be:

- Grounded in the best of current teaching practice;
- Providing a broad and balanced curriculum to enable all learners to make progress;
- Considering the implications for staff and learner wellbeing;
- Taking into account the unique school context and any barriers faced by learners and
- Making the best and complementary use of the strengths of all its various aspects including face-to-face teacher time.

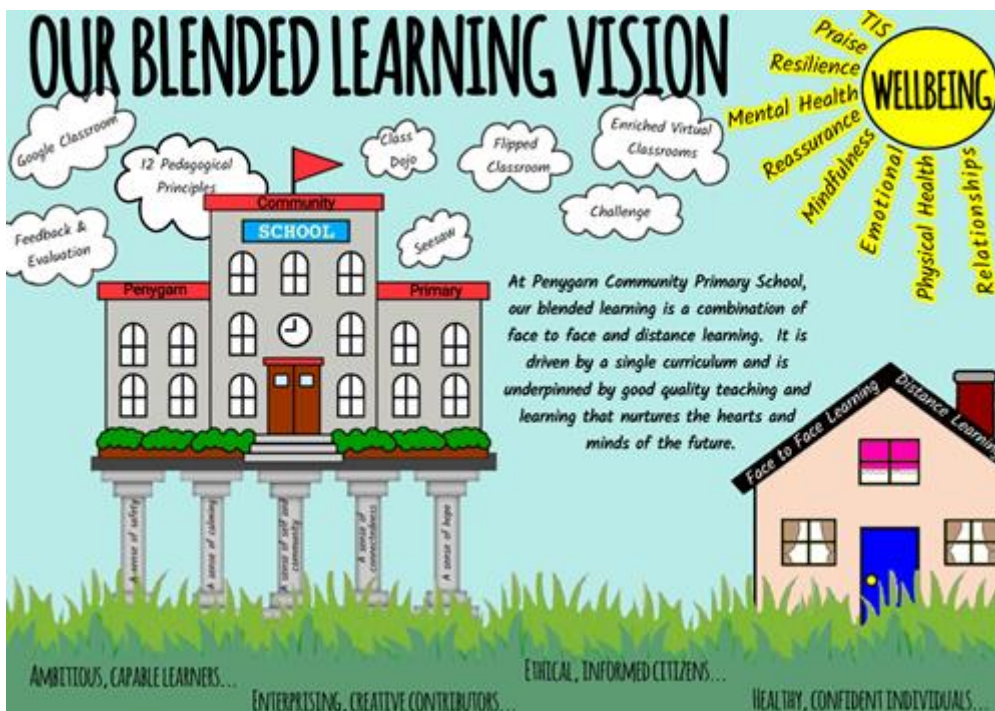




How do we deliver Blended Learning at Penygarn?

We ensure:

- a single curriculum approach is the basis to all of our planning;
- best use of classroom time to support home learning;
- a balance of subject and thematic project based learning in both FP and KS2;
- flexible grouping arrangements to provide the best access to intervention groups etc;
- the continued progress of learners unable to attend school;
- we develop the learning skills learners will need;
- a maintained focus on how to increase and ensure learner engagement;
- differentiation and scaffolding in the context of blended learning;
- clear roles and responsibilities for our support staff;
- we make the best use of the full range of new digital learning tools to support teaching;
- continued support for pupil wellbeing and
- we maximise the potential for additional intervention sessions for vulnerable learners.





REMINDERS

Half term Monday 15th February - Friday 19th February so no home learning will be required.

Training day on Friday 26th February has been re-arranged to Monday 19th April 2021.

I would like to take this opportunity to thank you all for your continued co-operation in helping us to keep our school safe.

Yours sincerely

L Sellars
Headteacher

